



Rossendale Climate Emergency Action Day 2021

#COP26Rossendale

Rossendale
BOROUGH COUNCIL

Rossendale Council taking a leadership role on Climate Change:
<https://www.youtube.com/watch?v=saXKt-z0UJ0>

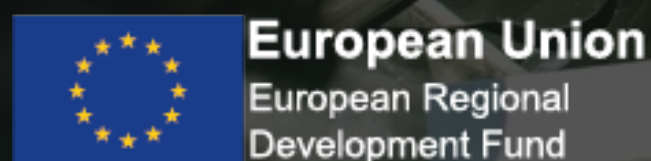


**CHAMBER
LOW CARBON**

HELPING BUSINESSES GO GREEN

Helping Businesses Go Green

Chris Gibbons, East Lancashire Chamber of Commerce



WWW.CHAMBERLOWCARBON.CO.UK

Why Should Businesses Go Green?



**CHAMBER
LOW CARBON**
HELPING BUSINESSES GO GREEN

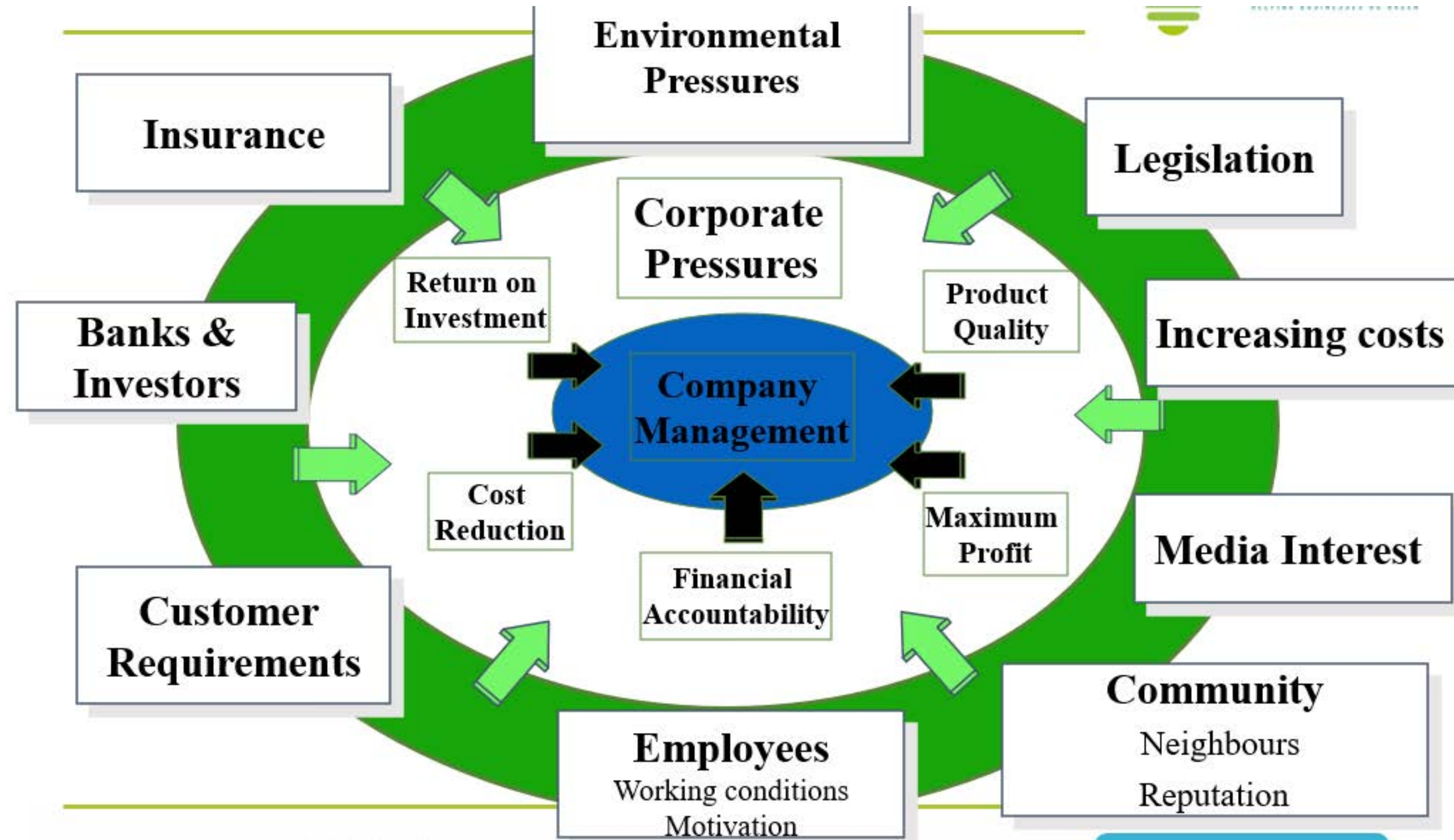


Can Your Businesses Go Green?



<https://www.youtube.com/watch?v=Wpy4xBftFuY>

Why Should Businesses Go Green?



Three Business Categories



- The early adopter
- Middle ground customer / supply chain led
- Legislatively driven / last to adopt

The early adaptor



- Who are they?
 - Large businesses, FTSE100, NHS, councils, government bodies, eco-conscious CEO's, international businesses
- Benefits?
 - New customers, reparational benefits, awards, staff development, technological development, energy self-sufficient, insulated form fluctuating costs and charges
- Drawbacks?
 - Some cost implications initially which are negated by better processes and benefits listed above

Middle ground customer / supply chain led



- Who are they?
 - Typically SME's, micro businesses
- Benefits?
 - Improves competitiveness, new markets Energy security and efficiency, shared knowledge amongst industry, ahead in incoming legislation, insulated against environmental shocks taxes and levies, awards, business growth, upskilled & engaged workforce
- Drawbacks?
 - Can appear over facing at first. But that is where trusted support can help, such as Chamber Low Carbon. **Taking small incremental steps now will protect you in the future.**

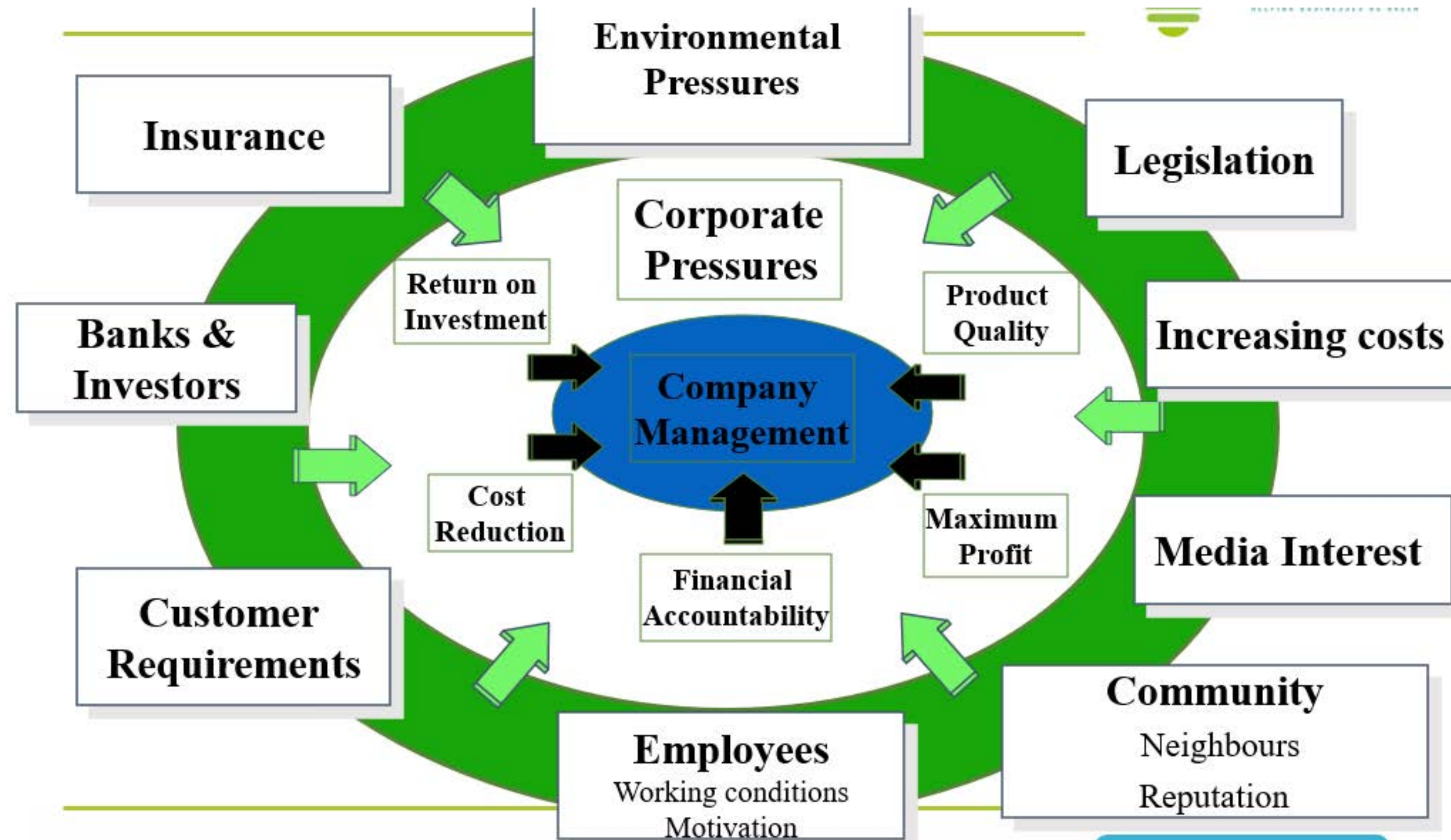
Legislatively driven / last to adopt

- Who are they?



- Benefits?
 - Perception of getting ahead or just getting on with it...
- Drawbacks?

Drawbacks explained



Can it be done?



- Yes, just ask Arnie & California!
- There is no shame in not knowing where to start
- Use a professional. In many cases, such as ours, SME's have access to lots of free support
- Outline what you what to achieve in draft to begin with
- Measure, because you can't manage what you don't see/know
- With results then form a more definitive plan and publish it

Who are we



East Lancashire Chamber of Commerce and Industry, in partnership with

- North and West Lancashire Chamber of Commerce,
- Businesswise solutions and
- Boost Lancashire.

We are here until 2023 and we offer

- 1 to 1 Business support
- Advanced business support
- Low carbon technologies - On-site generation
- Low carbon technologies - Innovation and manufacturing
- Supply chain and support services
- Best practice events



**CHAMBER
LOW CARBON**
HELPING BUSINESSES GO GREEN

Chamber Low Carbon programme introduction

Chris Gibbons

c.gibbons@chamberelancs.co.uk



Who can we help



Organisations must be within the Lancashire boundaries of LCC & its unitary authority areas

- SME's
 - Approx. £43m or €50m TO
 - Under 250 staff (FTE)
- There are other restrictions for specific industries.



How do we support businesses?



Technology & Innovation Support

- We do have a technology and innovation arm
- We have consultancy services to help get your low carbon product to market
- Let me know if you would like further information

How do we support businesses?



ARE YOU A LANCASHIRE BASED BUSINESS? LOOKING REDUCE YOUR CARBON FOOTPRINT, SAVE MONEY & DRIVE ENERGY EFFICIENCIES? WE CAN HELP YOU ACCESS



1-TO-1 BUSINESS SUPPORT IN

- Reducing bills and raw material waste
- Energy efficiency
- Process resource efficiency
- Water efficiency
- Waste / resource management
- On-site energy auditing
- On-site carbon footprint analysis and action plan



BEST PRACTICE EVENTS

- Let us help you understand which low carbon renewable energy to choose and why
- Find out about low carbon technology, how you can use it and which is best for your business
- We can help you calculate the pay back period
- Understand how it can be installed on your premises



ADVANCED BUSINESS SUPPORT

- Behaviour change/On-site training
- Masterclass of management systems ISO 14001 and ISO 50001
- Masterclass into on-site energy auditing
- Introduction to environmental auditing



Events & Publications



Chamber Low Carbon Newsletters

- Monthly Local Low Carbon News
- Legislation and Policy Updates

Events

- Lunch and Learn
- A Conversation with...
- Low Carbon Expo

Energy & Environment Forum

- Legislation and Policy
- Share Good Practice

Circular Economy Club

- Share Good Practice
- Supply Chain



Lunch & Learns



<https://www.youtube.com/channel/UCMBesSJ0PIVg6FVt0css7s4Q/featured>

The screenshot shows the YouTube channel page for Chamber Low Carbon. The left sidebar includes navigation links: Home, Explore, Subscriptions, Library, History, Your videos, Watch later, and Show more. Below these are subscription links for UN Climate Change, United Nations, and WorldResourcesInst. The main content area displays a grid of featured videos under the 'VIDEOS' tab. The videos are arranged in two rows of five. Each video thumbnail includes the Chamber Low Carbon logo, the title, the date, and the duration. The first row includes videos from the 20th October 2021 Circular Economy Club Event, the 14th October 2021 Chamber Low Carbon LIVE Lunch and Learn, the 12th August 2021 Chamber Low Carbon LIVE Lunch and Learn, BOOST - Pritam Pal, and REDCAT, Miranda Barker - East Lancs Chamber of Commerce. The second row includes Green Energy Market, Peter Catlow - Businesswise..., Perfect Sense Energy, Gary Brandwood : Chamber Low..., Solar PV Update, Ged Ennis - Low Carbon Energy :..., Electric Vehicles & Net Zero, Keith Evens - Electricity NW..., and Energy Ace, Gary Vizard : Chamber Low Carbon Virtu....

Video Title	Date	Duration	Views	Time Ago
20th October 2021 - Circular Economy Club Event with T...	20th October 2021	1:58:49	71 views	2 weeks ago
14th October 2021 Chamber Low Carbon LIVE Lunch and...	14th October 2021	1:01:04	29 views	2 weeks ago
12th August 2021 Chamber Low Carbon LIVE Lunch and...	12th August 2021	27:14	12 views	2 months ago
BOOST - Pritam Pal : Chamber Low Carbon Virtu...		24:05	21 views	4 months ago
REDCAT, Miranda Barker - East Lancs Chamber of...		9:08	13 views	4 months ago
Green Energy Market, Peter Catlow - Businesswise...		22:57	5 views	4 months ago
Perfect Sense Energy, Gary Brandwood : Chamber Low...		24:52	10 views	4 months ago
Solar PV Update, Ged Ennis - Low Carbon Energy :...		32:58	7 views	4 months ago
Electric Vehicles & Net Zero, Keith Evens - Electricity NW ...		29:38	6 views	4 months ago
Energy Ace, Gary Vizard : Chamber Low Carbon Virtu...		28:30	36 views	4 months ago



Chamber Green Rose



Chamber Green Rose is our low cost, collaborative approach to achieving BS 8555 or ISO14001 compliance

We focus on performance and continual improvement, finding practical approaches for organisations of all sizes and sectors, delivered through;

6 half day workshops

1 Half day onsite energy & environmental Review

1 Carbon baseline footprint review

Pre Assessment



Who Have We Helped?



- IT recycling, repurposing and support company
 - Onsite support, report, carbon footprint & grant
- Grounds care & maintenance equipment provider
 - Green Rose course, carbon footprint & grant
- Hospitality venue
 - Onsite support, report, Green Rose & now working towards being officially ISO 14001 accredited, invited to COP26 representing hospitality.
- Precision engineering company
 - Onsite green tech report & grant

In regards to non SME support, at this time we don't know of any funded options in the equivalent mould as ourselves.

Areas which may help but we can't truly speak on behalf of these programmes are

AMRC - <https://www.amrc.co.uk/>

Catapult - <https://catapult.org.uk/>

Make UK - https://www.makeuk.org/future-makers/become-an-apprentice?gclid=Cj0KCQiA-K2MBhC-ARIsAMtLKRtpezn5LlcFqBN7qebSmNkootgleb5zgf7jkUqv5nauDgegxrKEUYaApUoEALw_wcB

Carbon Trust - <https://www.carbontrust.com/our-projects/the-beis-industrial-energy-efficiency-accelerator-ieeea>

All are based around energy reduction for big users rather than our type of support. But may help if lots of staff may translate in to energy use.

GET SOCIAL WITH CHAMBER LOW CARBON



@CHAMBERLOWCARB | SEARCH: CHAMBER LOW CARBON

EMAIL: INFO@CHAMBERLOWCARBON.CO.UK / c.gibbons@chamberelancs.co.uk

PHONE: 01282 356482

WWW.CHAMBERLOWCARBON.CO.UK

[Chamber Low Carbon Events: eventbrite](#)



European Union

European Regional
Development Fund



Business Carbon Reduction Grants

Adam Allen

Director of Communities

Business Carbon Reduction Grants

- A four year carbon reduction grant programme
- In partnership with the East Lancashire Chamber of Commerce – who will provide free carbon audit
- Encouraging smaller local businesses including retail shops and services to adopt carbon efficient technologies
- Year one focus is carbon reduction in buildings
- £50,000 is available for SMEs up to a maximum £5000 per project.
The grant must not exceed 50% of the total project costs

Business Carbon Reduction Grants

- **Selection Criteria**
- All recipients must be Rossendale based and all projects must take place in Rossendale
- Funding for successful scheme should not be available through other funding routes/grant schemes
- Potential schemes must be evidence based and judged on their impact on carbon reduction
- Only one scheme per organisation will be funded in any one financial year

Business Carbon Reduction Grants

Some examples of eligible products for RBC carbon reduction grants:

- Renewable energy technologies
- Battery storage
- Lighting and controls
- GAS LPG or oil boilers
- Heat-pumps and air conditioning
- Infrared and electric heating
- Heating and cooling controls

Business Carbon Reduction Grants – how to apply

- Email RBC to register interest:
climatechange@rossendalebc.gov.uk
- Complete Chamber of Commerce registration form for Carbon audit
- Complete RBC capital grant application form
- Send completed grant application with 3 quotes for work to CoC for review

Business Carbon Reduction Grants – assessment process, payment and follow up

- RBC grants panel review applications at the monthly panel meeting
- RBC inform applicant on outcome within 7 days of panel decision
- CoC sign off once work completed
- RBC process payment following CoC sign off
- RBC liaise with CoC on 12 month follow up and collate carbon reduction data

Business Carbon Reduction Grants

- Contact us on climatechange@rossendalebc.gov.uk for registration, application forms and guidance notes



PLEDGE TO PLANT

As part of Rossendale Councils commitment to reducing our carbon footprint we have pledged to plant a tree for every child in the borough over the next three years. That's around 16,000 trees and will create Rossendale Forest across the borough.

The first stage of the project is to plant around 6,000 trees by April 2022.

The trees being used will all be native tree species, so we'll be enhancing our natural eco system.

Tree planting is a simple solution that can play a large role in ecosystem recovery and reduce climate change impacts. The right tree planted in the right place can have multiple, far reaching economic, environmental, and social benefits. It can help to:

- ✓ *Reduce the chance and severity of flooding events locally and downstream*
- ✓ *Improve water quality and stabilise soils*
- ✓ *Absorb atmospheric carbon and reduce global temperatures*
- ✓ *Support wildlife, increase biodiversity and environmental resilience*
- ✓ *Increase social and amenity value*
- ✓ *Improve the look of the area and increase the value of local homes*
- ✓ *Improve air quality and reduce noise levels*

This is a fantastic opportunity for you to help make a real difference to our environment now and for future generations.

We will be hosting tree-planting events throughout this winter, especially during tree planting week which begins on the 27th November and we're looking for your help to plant these beautiful trees.

Pledge to plant and register now

<https://bit.ly/rbcforest1>

5 easy steps to tree planting



This is a simple five step method to planting tree whips. Slit planting is suitable for bare soil and grass, and it can be easier than pit planting, especially if you've got stony soil.

Step 1

Press your spade all the way into the ground, then push it forwards to create a slit. Make sure it's deep enough for the tree roots.

Step 2

Keep the slit open with your spade and place your tree inside with the root plug about 2cm below ground level.

Step 3

Remove the spade and push the soil back around the tree.

Step 4

If using tree guards or spirals to protect your saplings, this is the stage to add these. Press the protection firmly into the soil.





ROSSENDALE
FOREST



[Facebook.com/RossendaleForest](https://www.facebook.com/RossendaleForest)



[Instagram.com/RossendaleForest](https://www.instagram.com/RossendaleForest)



[Twitter.com/RBCForest](https://twitter.com/RBCForest)

webuybooks



The Book Specialist

**WE BUY
GAMES**

**TURN YOUR
STUFF INTO CASH**

Practical Climate Change



COP26 | Nov 5, 2021, 07:08am EDT | 6,470 views

118 Private Jets Take Leaders To COP26 Climate Summit Burning Over 1,000 Tons Of CO2

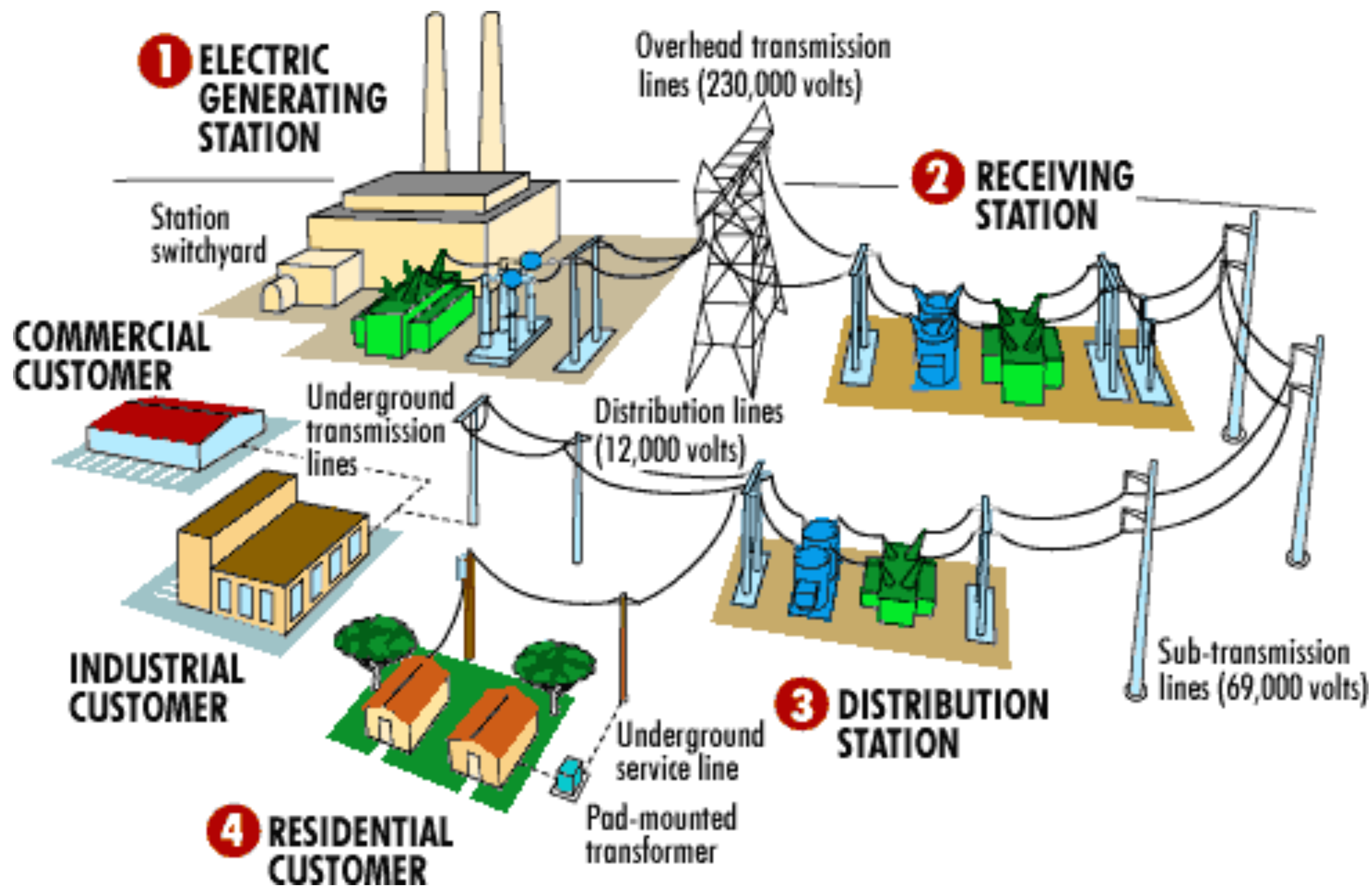


COP26

THE TIMES

Cop26: Cries of hypocrisy as private jets fill the Glasgow sky













British Heart Foundation



British Heart
Foundation



RIGHT FOR EVERY HEARTREAT



St Barnabas Hospice transforms its warehouse into huge destination shop





www.webuybooks.co.uk

webuybooks

The Book Specialist

webuybooks

The Book Specialist

www.webuybooks.co.uk

WX67 ZVF

Download
Our App!







webuybooks



The Book Specialist

**WE BUY
GAMES**

**TURN YOUR
STUFF INTO CASH**

Climate Emergency Action Day

10th November 2021

Presentation by Simon K Macaulay
Anglo Recycling Technology Ltd

Anglo Recycling Technology Ltd



Manufacturing
needle felt in
Whitworth
since 1939

Anglo Family Group



Celebrating
80 years

August 2019

Family, employees
and friends

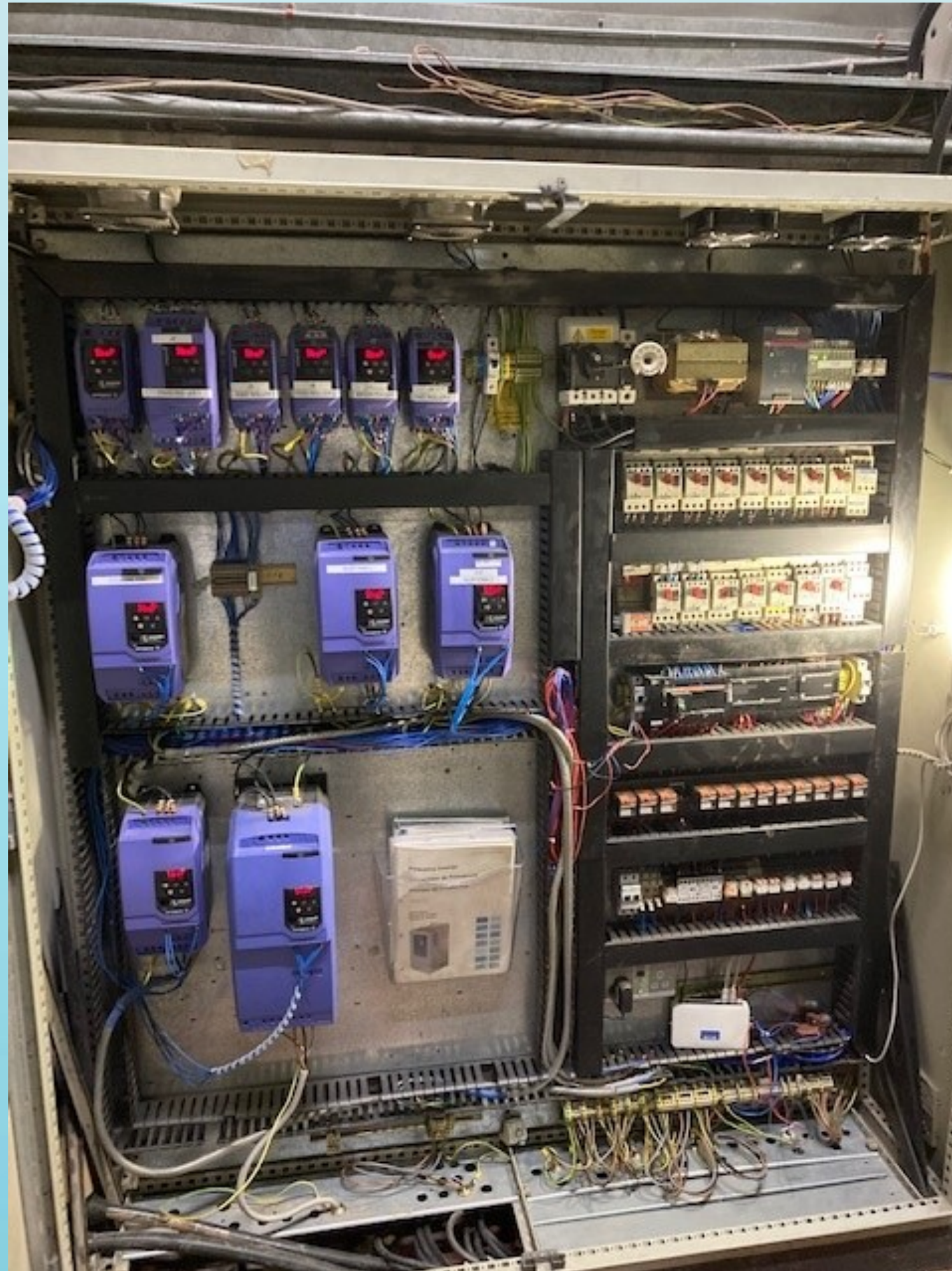
Dust Bags



A great idea from our Operations Manager

- Saving 12 enormous single-use plastic bags/week
- Easier for production

Control Panel



A great idea from our Electrician

- 65-70% of the parts recycled from redundant panels
- Move from contactors to inverters reduces energy usage by up to 35%

Why inverters reduce your carbon footprint

- Technology solution – invented 25 years ago
- Acts like a ‘dimmer switch’ for your motor. Motor only takes the power it needs. Before inverters, contactors ran motor at full speed all the time, using the AC energy coming in from the grid.
- Payback = 12-18 months

Recycling Clothing



Product development work by the Technical and Operations Managers

- Surplus 'fast fashion' from charity shops
- Fibre already shredded used to arrive on a truck from 800km away
- Now collect the surplus clothing from under 20km away
- Shredded fibre reused to manufacture carpet underlay

ANGLO
RECYCLING

INNOVATING WITH
RECYCLED FIBRE

GIVING TEXTILES A SECOND LIFE